

***Health Workforce Initiative  
Statewide & Regional Directors of Employer Engagement  
are pleased to present:***

# **BEHAVIORAL/MENTAL HEALTH CAREERS AWARENESS VIRTUAL SYMPOSIUM**

***"Ushering the Next Generation of Para-professionals to Professionals"***

**Part Five**

**Doctoral Level Careers**



**Health Workforce Initiative**

# THANK YOU!

This event was produced pursuant to grant from Kaiser Permanente Mental Health and Wellness (MHW) Initiative Strategic Partnership Grant (16040) and hosted by the Health Workforce Initiative (19-156-001) powered by the California Community College Chancellors Office.

# Zoom etiquette

- ▶ Make sure you are on mute throughout the presentation.
- ▶ Your participation in the poll questions is important.
- ▶ If you have questions for the presenters, put them in the chat box.
- ▶ Questions and Answer time will be held at the end of the presentation.

**Please and Thank you!**

# Today's Moderator



**Monica E. Guardian**  
**Child, Youth, and Family Advocate**  
**Director of Workforce Development**  
**AltaMed Health Services Corp.**

# Objectives for today's symposium

- ▶ Objective #1: Increase awareness of behavioral-mental health careers and their related pathways.
- ▶ Objective #2: Identify where to locate behavioral-mental health related educational programs.

## Today's Agenda

- ▶ Brief Introduction
- ▶ Three Career Presentations
- ▶ Question and Answers

# What is mental health?

*Mental health, as defined by the World Health Organization, is “a state of well-being in which every individual realizes his or her own potential, can cope with the normal stresses of life, can work productively and fruitfully, and is able to make a contribution to his or her community.”*





# FACT

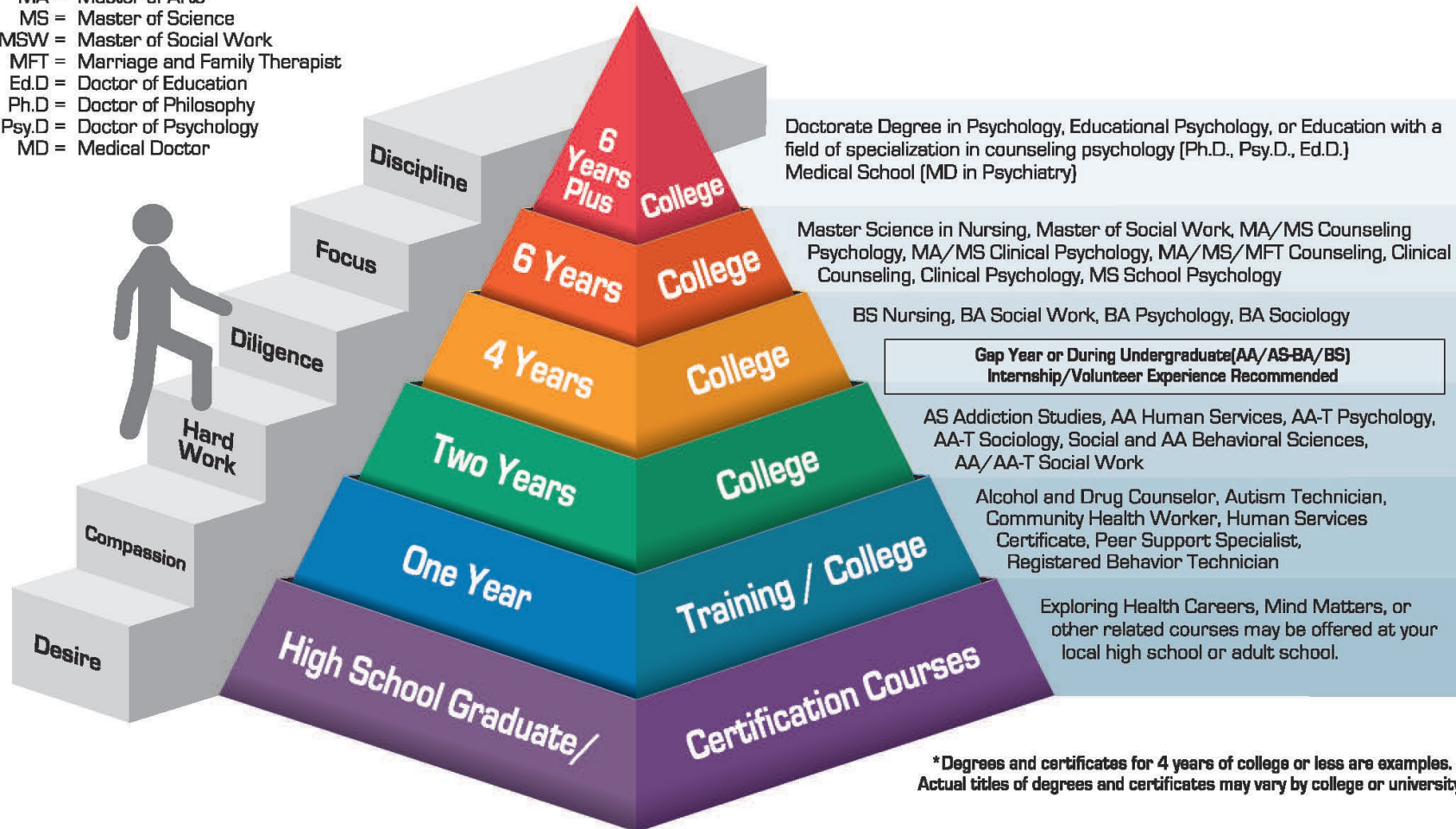
- ▶ We all experience different levels of mental health throughout our lives.
  - ▶ Depression is the leading cause of disability worldwide.
  - ▶ *Over 44 million American adults (18.07%), have a mental health condition.*
  - ▶ Less than 50% of U.S. adults with mental illness received treatment in 2018.

*There are not enough mental health professionals to go around.*

***Pursuing a career in behavioral health  
can put you in a position to help others.***

# Behavioral-Mental Health Related Certificates and Educational Degrees

- AA = Associate in Arts
- AA-T = Associate in Arts for Transfer
- AS = Associate in Science
- AS-T = Associate in Science for Transfer
- MA = Master of Arts
- MS = Master of Science
- MSW = Master of Social Work
- MFT = Marriage and Family Therapist
- Ed.D = Doctor of Education
- Ph.D = Doctor of Philosophy
- Psy.D = Doctor of Psychology
- MD = Medical Doctor



\*Degrees and certificates for 4 years of college or less are examples. Actual titles of degrees and certificates may vary by college or university.



# Today's Career Spotlights

- ▶ Licensed Psychologist
- ▶ Psychiatrist
- ▶ Behavioral Health Medical Director

# Licensed Clinical Psychologist

*A Licensed Clinical Psychologist is a professional who can work in a wide variety of settings to help people learn to cope with stressful situations, overcome addictions, manage their chronic illnesses. They also provide tests and assessments that can help diagnose a condition or tell more about the way a person thinks, feels, and behaves. These tests may evaluate intellectual skills, cognitive strengths and weaknesses, vocational aptitude and preference, personality characteristics, and neuropsychological functioning.*



***Sandra Pisano, PsyD***

*(Education Degree: Doctor of Psychology)*

**Clinical Psychologist, Director of Behavioral Health  
AltaMed Health Services Corp.**

# Psychiatrist

*A psychiatrist is a medical doctor (an M.D. or D.O.) who specializes in mental health, including substance use disorders.*

*Psychiatrists are qualified to assess both the mental and physical aspects of psychological problems. Psychiatry is the branch of medicine focused on the diagnosis, treatment and prevention of mental, emotional and behavioral disorders.*



**Evita Limon-Rocha, MD MPH**

*(Education Degree: Medical Doctor & Master of Public Health)*

**Child & Adolescent Psychiatrist**

# Behavioral Health Medical Director

*A Behavioral Health Medical Director promotes the quality of care. A Behavioral Health Medical Director is a medical professional that oversees the study and treatment of patients with emotional, mental, or psychological disorders as well as manages and directs the activities of behavioral health clinical services. They ensure all behavioral health operations are in compliance with clinical guidelines.*



**Rayek Nafiz, MD MPP**

*(Education Degree: Medical Doctor & Master of Public Policy)*

**Medical Director of Behavioral Health  
&  
Addiction Psychiatrist**

**Penn Presbyterian Medical Center**



Jobs

# Make Caring Your Career™

ExploreHealthCareers.org is a collaboration between today's health professionals and leading health care associations designed to help people like you start down the road toward a career in health. Here you'll find the latest health career information and tools to guide you as you prepare for a future in health care.

Sign Up

Is a Career in Health Right for You?

Get Started

Focus Your Career Search

Find Your Fit

Find your first job or your next

Build Your Career

<https://explorehealthcareers.org>

COVID-19 Updates

Powered by California Community Colleges

Health Workforce Initiative

SRIS448 DATA COLLECTION HEALTH OCCUPATIONS DIRECTORY

ABOUT HWI CURRICULUM EDUCATORS STUDENTS RESOURCES CAREER PATHWAYS BLOG

### WHAT'S NEW AT HWI?

Latest

- DCA Issues New Waiver Extensions 8/27/2020
- Healthcare Tim Webinar of the Month: September 2020

Featured

- CECCO - Updates on COVID-19
- Online and Virtual Simulation Resources
- California State Governor's Office Information Update
- SRIS448
- Webinars Updated
- VITAS Healthcare and Health Workforce Initiative Collaborate

Help Stop The Spread Of COVID-19

# of Confirmed Cases

Powered by the Center for Systems Science and Engineering (CSSE) at Johns Hopkins University (JHU)

Proper Handwashing

Watch this short video to learn more about the facts of washing your hands and the CDC's do's and don'ts of preventing the spread of germs.

WHAT YOU NEED TO KNOW ABOUT HANDWASHING

CALIFORNIA COMMUNITY COLLEGES Statewide Health Occupations Directory

BROWSE BY PROGRAM BROWSE BY COLLEGE

Welcome to the statewide health occupations directory for California Community Colleges. This site is designed to help prospective students explore the career opportunities that exist through health occupation programs in our local schools.

A Degree With A Guarantee.com Associate Degree for Transfer

Brought to you by the California Community Colleges

List of Colleges Success Stories FAQ Resources Search... ENG ESP

About the Program Find Your Path Find Colleges Dates & Events

## FIND YOUR PATH

California community colleges provide a streamlined pathway that prepares you to transfer to a participating four-year university.

VIEW DEGREES

## FIND COLLEGES

Attend any of the 116 California community colleges, then transfer to one of the many participating four-year universities and you're on the quickest path to earning your bachelor's degree.

GET STARTED

COMMUNITY COLLEGE UNIVERSITY

FINANCIAL AID OPTIONS

California Community Colleges

Financial aid is available year-round to cover tuition, books, supplies and sometimes even help with your rent. Visit [caaffordcollege.com](http://caaffordcollege.com) to learn about the many different types of aid available and when and how to apply. [Learn More](#)

There are currently no events.

Four-Year Universities

HWI Website: <https://ca-hwi.org/>

HWI Email: [cahwi@canyons.edu](mailto:cahwi@canyons.edu)

<https://adegreewithaguarantee.com/en-us/>

**Thank you for  
your participation!**



HWI Website: <https://ca-hwi.org/>

HWI Email: [cahwi@canyons.edu](mailto:cahwi@canyons.edu)

- ▶ PART 6 - Friday November 13, 2020: 9 am - 10 am **Career Mapping and Decision-Making** (Student & Parent Workshop)  
[https://bit.ly/HWI\\_BehavioralHealth\\_Careers6](https://bit.ly/HWI_BehavioralHealth_Careers6)
- ▶ PART 7 - Friday November 20, 2020: 9 am - 10 am **Nursing in a Behavioral Health Setting** (Psych Tech, Psychiatric RN, Psychiatric Mental Health Nurse Specialist, Mental Health Nurse Practitioner)  
[http://bit.ly/HWI\\_BehavioralHealth\\_Careers7](http://bit.ly/HWI_BehavioralHealth_Careers7)

# NEED TO HELP A FRIEND OR FAMILY MEMBER?

- ▶ **2-1-1: CONNECTING PEOPLE TO INFORMATION AND RESOURCES.** California is dedicated to helping Californians in need get access to, and benefit from, the rich range of social services available to them.
  - ▶ Dial 2-1-1 or visit [www.211ca.org](http://www.211ca.org)
  - ▶ Free 24/7 support
- ▶ In a crisis? Text **HOME** to **741741** to connect with a Crisis Counselor
  - ▶ Free 24/7 support