

# Access to Care



# Oh the places we have been



And the places we will go

# Out Patient & Residential Treatment Facilities



- Swap Meets & Farmers Markets
- Food Drives

# Community Centers



# Community Outreach Programs



# Out on the Road



# Future Home Visits





# Collaborative Practice

One person can not make the program a success

However, one person can cause its demise.



# Guiding our Focus

- The Essential Curriculum Elements, developed by the American Association of Colleges of Nursing.
- The Core Competencies for Inter-professional Collaborative Practice.
- Curriculum Elements for Both
  - research,
  - policy,
  - organization,
  - financing of health care,
  - ethics,
  - values and ethics for collaboration,
  - roles and responsibilities,
  - communication,
  - teamwork.

# *Core competencies for inter-professional collaborative practice*

## **Interprofessional education:**

“When students from two or more professions learn about, from and with each other to enable effective collaboration and improve health outcomes” (WHO, 2010)

## **Interprofessional collaborative practice:**

“When multiple health workers from different professional backgrounds work together with patients, families, carers [sic], and communities to deliver the highest quality of care” (WHO, 2010)

**Interprofessional teamwork:** The levels of cooperation, coordination and collaboration characterizing the relationships between professions in delivering patient-centered care

- Interprofessional Education Collaborative Expert Panel. (2011).



# Student Impact

On and In the Community



**“In May, we’ll provide full health care coverage to children of undocumented workers.”**

Governor Jerry Brown, 2016 State of The State

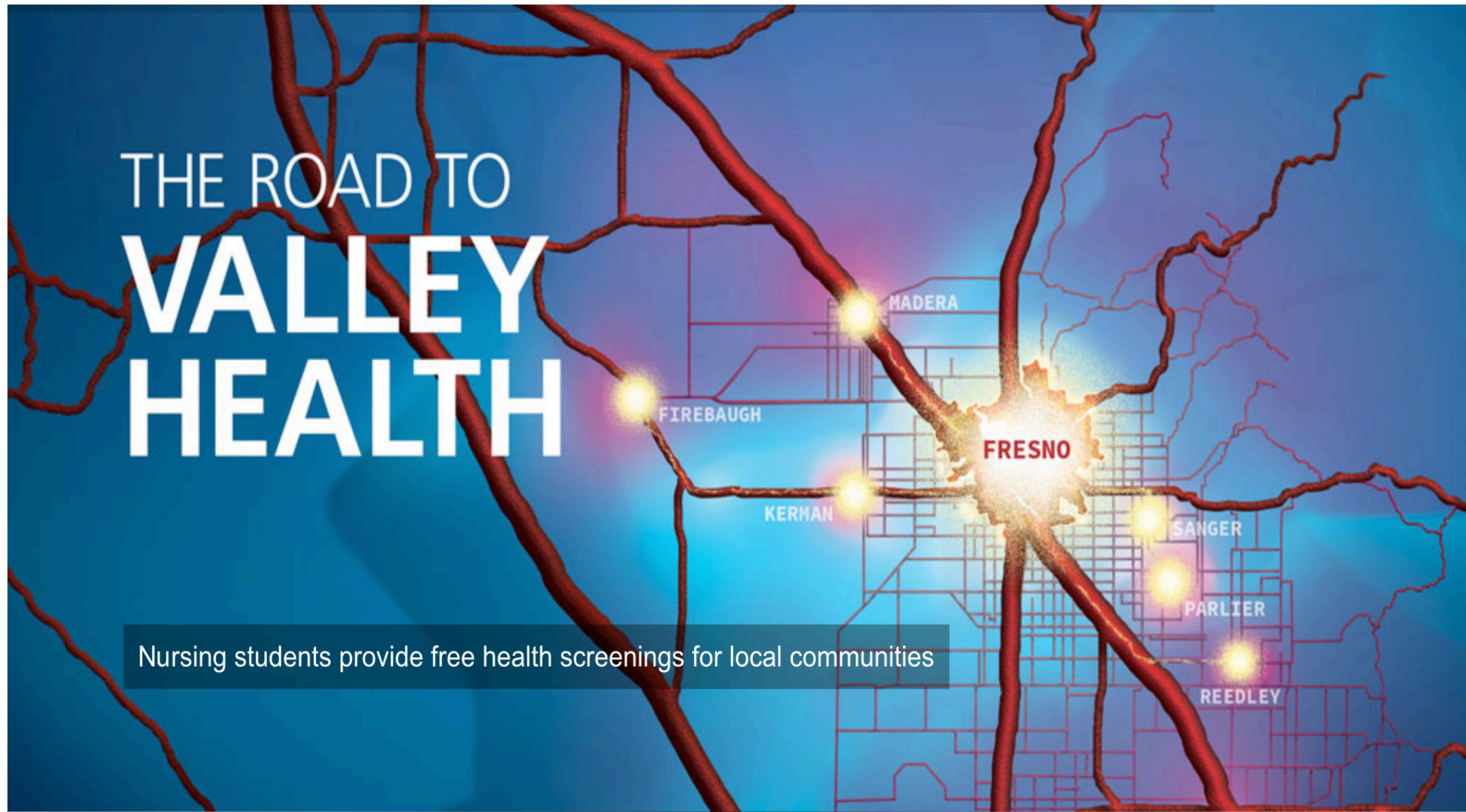
A portrait of Governor Jerry Brown, an older man with short, light-colored hair, wearing a dark suit, white shirt, and a patterned tie. He is looking slightly to the right of the camera with a serious expression.

#HEALTH4ALL

health happens

# THE ROAD TO **VALLEY HEALTH**

Nursing students provide free health screenings for local communities



# Providing Care in the Community



# Increasing Access to Health Care



# February 2016



**24<sup>TH</sup> RANKED**  
**NURSING PROGRAM**  
**IN THE NATION**  
*According to Nurse Journal's  
2015 Western Rankings for  
America's Best Nursing Schools*



---

<b>9</b> VALLEY CITIES VISITED	<b>35</b> STUDENTS TRAINED	<b>518</b> PATIENTS SERVED
---	----------------------------------	----------------------------------

---

**72** RECORD NUMBER OF  
PATIENTS SERVED DURING  
A FOUR-HOUR VISIT

---

**\$319,500** IN GRANTS  
FROM THE SONG-BROWN PROGRAM  
TO SUPPORT THE MOBILE UNIT

---

- **The Community Health Mobile Unit** operates during the spring and fall semesters. For information on upcoming dates and locations, call 559.278.2041.



# Collaboration to Provide Care



# Collaboration to provide care





# Latest Statistics

Sept. 2015- May 2016

25 site visits

Over 115 clinical hours for BSN, NP's, pharmacology students, athletic students, dietetic students, and psychology students.

The team work amongst the faculty and students was so successful we served 753 patients.

One site serving 114 in a six hour day

# Student Impact



# Students Mentoring Students



# Student Impact



They drank the Kool-Aid

# Health on Wheels



**Fresno State**  
**Health on Wheels**

The image displays three logos at the top. On the left is the Fresno State Diabetes Coalition logo, featuring a stylized 'dc' and the text 'FRESNO STATE DIABETES COALITION' and 'WHAT'S YOUR TYPE?'. In the center is the Fresno State Nursing logo, featuring a bulldog head and the text 'FRESNO STATE' and 'NURSING'. On the right is the SINDA logo, featuring carrots and an apple, with the text 'SINDA Student Nutrition Dietetic Association California State University, Fresno'.





facebook.com



Fresno State Health on Wheels



Kathleen

Home



Page

Messages

Notifications 1

Insights

Publishing Tools

Settings

Help



# Fresno State Health on Wheels

@FSHealthonWheels

Home

About

Photos

Events

Likes



Liked

Message

More

+ Add a Button



Status



Photo / Video



Offer, Event +



Write something...

Community

Search for posts on this Page





### Fresno State Diabetes Coalition

April 23 · 🌐

Successful morning providing diabetes education with the [Fresno State Health on Wheels!](#)



👍 Devin Elise Brittain and 12 others

1 Comment



Matthew Jaime shared [Fresno State Diabetes Coalition's](#) photo.

May 1 · 👤



[Fresno State Diabetes Coalition](#) at [Madera FleaMarket](#).

May 1 · Madera, CA · 🌐

Come get a FREE diabetes screening & education at the Fresno State Health on Wheels Mobile Unit! We'll be here in Madera until 4:00. [#DiabetesAwareness](#) [#DiabetesManagement](#) [#FresnoState](#)



# Fresno State Health on Wheels

August 28 at 1:03pm · 🌐

Let's protect and promote!

S

**Funding public health protects our communities and kids, saves lives ... and saves money**

Prevention and public health programs:

- Keep our kids healthy and supervised driving
- Save lives
- Save money

Public health keeps kids healthy and communities strong

Public health and prevention programs in your community:

- Immunize children
- Screen people for HIV/AIDS
- Protect people from disease and disease outbreaks
- Screen people for tobacco use
- Screen people for lead exposure
- Screen people for hearing loss
- Screen people for vision problems
- Screen people for dental issues
- Screen people for mental health issues
- Screen people for substance use
- Screen people for sexually transmitted infections
- Screen people for high blood pressure
- Screen people for high cholesterol
- Screen people for diabetes
- Screen people for depression
- Screen people for anxiety
- Screen people for Alzheimer's disease
- Screen people for Parkinson's disease
- Screen people for Huntington's disease
- Screen people for Fragile X syndrome
- Screen people for Down syndrome
- Screen people for autism spectrum disorders
- Screen people for intellectual disability
- Screen people for developmental delay
- Screen people for hearing loss
- Screen people for vision problems
- Screen people for dental issues
- Screen people for mental health issues
- Screen people for substance use
- Screen people for sexually transmitted infections
- Screen people for high blood pressure
- Screen people for high cholesterol
- Screen people for diabetes
- Screen people for depression
- Screen people for anxiety
- Screen people for Alzheimer's disease
- Screen people for Parkinson's disease
- Screen people for Huntington's disease
- Screen people for Fragile X syndrome
- Screen people for Down syndrome
- Screen people for autism spectrum disorders
- Screen people for intellectual disability
- Screen people for developmental delay

We all benefit

Public health saves lives

For each 10 percent increase in local public health spending:

- Heart disease deaths decrease 18%
- Cardiovascular deaths decrease 12%
- Diabetes deaths decrease 14%
- Cancer deaths decrease 13%

Public health can reduce serious injuries and death in our children by 50%

By 2025, 42% of adults will be obese (up from 32% in 2000)

Public health saves money

Every \$1 spent on prevention saves \$3.28 in health care costs

Every \$1 spent on individual activities saves \$1.29 in health care costs

75% of U.S. health spending is on preventable chronic conditions such as obesity, heart disease and diabetes, and only 2 cents of every \$1 spent on health care goes toward public health and prevention

"An ounce of prevention is worth a pound of cure" — Benjamin Franklin

We must protect and increase funding for public health programs at all levels

www.apha.org

87 people reached

Boost Post

<https://www.youtube.com/watch?v=ZsCvhghgdbQ>





# That is why.....

Community outreach.....

Access to care.....

Collaboration.....